

Getting started with Zequr

This 3-page introduction will guide you through the basic features of Zequr.

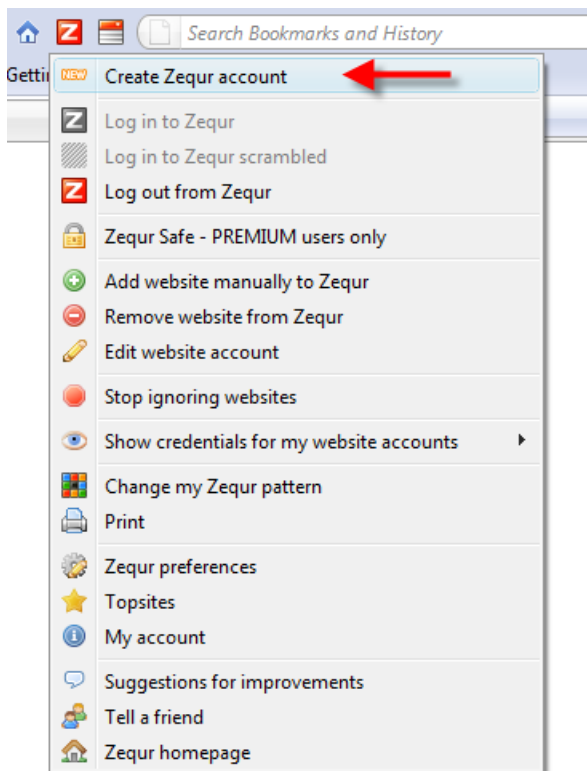
Download and install Zequr using Firefox

1. Open Firefox and go to www.zequr.com
2. Click "Download for Firefox".
3. Accept Terms of use and click "Download Zequr".
4. In Firefox dialog click "Allow".
5. In Firefox dialog click "Install Now".
6. In Firefox dialog click "Restart Firefox".

Download and install Zequr using Internet Explorer

1. Open Internet Explorer and go to www.zequr.com
2. Click "Download".
3. Click "Download for Internet Explorer".
4. Accept Terms of use and click "Download Zequr".
5. Click "Run".
6. Click "Run".
7. Click "Next".
8. Click "Next".
9. Click "Next".
10. Click "Yes".
11. Close Internet Explorer.
12. Installation Complete. Click "Close". You can now re-open Internet Explorer and start using Zequr.

Create Zequr account



1. The first thing you need to do is to create a Zequr account. Open the main menu and select "Create Zequr account".
2. Enter your name and a valid email address.
IMPORTANT: The email address you enter must be valid!
3. Choose a username.
IMPORTANT: You must remember your username!
4. Select the one of the 3 color cards you prefer.
5. Choose a pattern with at least 4 fields on your preferred color card. A pattern can be any combination of fields you like and find easy to remember.
IMPORTANT: Zequr does NOT know your pattern, you must remember it yourself!
6. Re-enter your pattern.
7. A confirmation email will be sent to you with an activation link.
8. You can start using Zequr at once, but your account must be activated as soon as possible by clicking the activation link in the email.

Log in to Zequr

1. Select "Log in to Zequr" in the main menu.
2. Enter the username you have selected and click "Next". (You can have Zequr remember your username for you)

3. Click your color card.
4. Enter your pattern and click "Login".

Add websites to Zequr

1. Open your browser and log in to your Zequr account.
2. Go to the website you want to add to Zequr.
3. Log in to the website as you normally do by entering username and password and clicking the websites login button.
4. Zequr will now open a window. Check if the data registered by Zequr are correct and finish by clicking "Add website".

There are millions of websites with login and a few of them cannot be registered automatically by Zequr. If that happens to you do this: open the websites login page, select "Add website manually to Zequr" in the main menu and follow instructions. When you later on want to log in to a website that has been added manually, Zequr will display your codes so you can easily copy-paste them into the website.

Log in to website using Zequr

1. Open your browser and log in to your Zequr account.
2. Select the website you want to log in to in the dropdown list. Zequr will then open the website and insert your username and password.

We hope you will enjoy Zequr!

The Zequr Team.